

±3.6 acres Available for Development

1904 Tappahannock Boulevard | Tappahannock, VA 22560



HIGHLIGHTS

- 3.605 Acres
- Up to (3) Outparcels / 560 ft. of Road Frontage
- Broad Commercial Zoning
- Located Between Food Lion and Lowes on Rt.17 (Tappahannock Blvd)
- Median Break / Accessible going North and South, Rear Access to White Oak Road and Traffic Signal

DEMOGRAPHICS

	3 miles	5 miles	10 miles
Population	4,376	6,251	14,198
Avg HH Income	\$57,738	\$57,470	\$56,543

TRAFFIC COUNT

Route 17 29,500± VPD



EXCLUSIVE AGENT

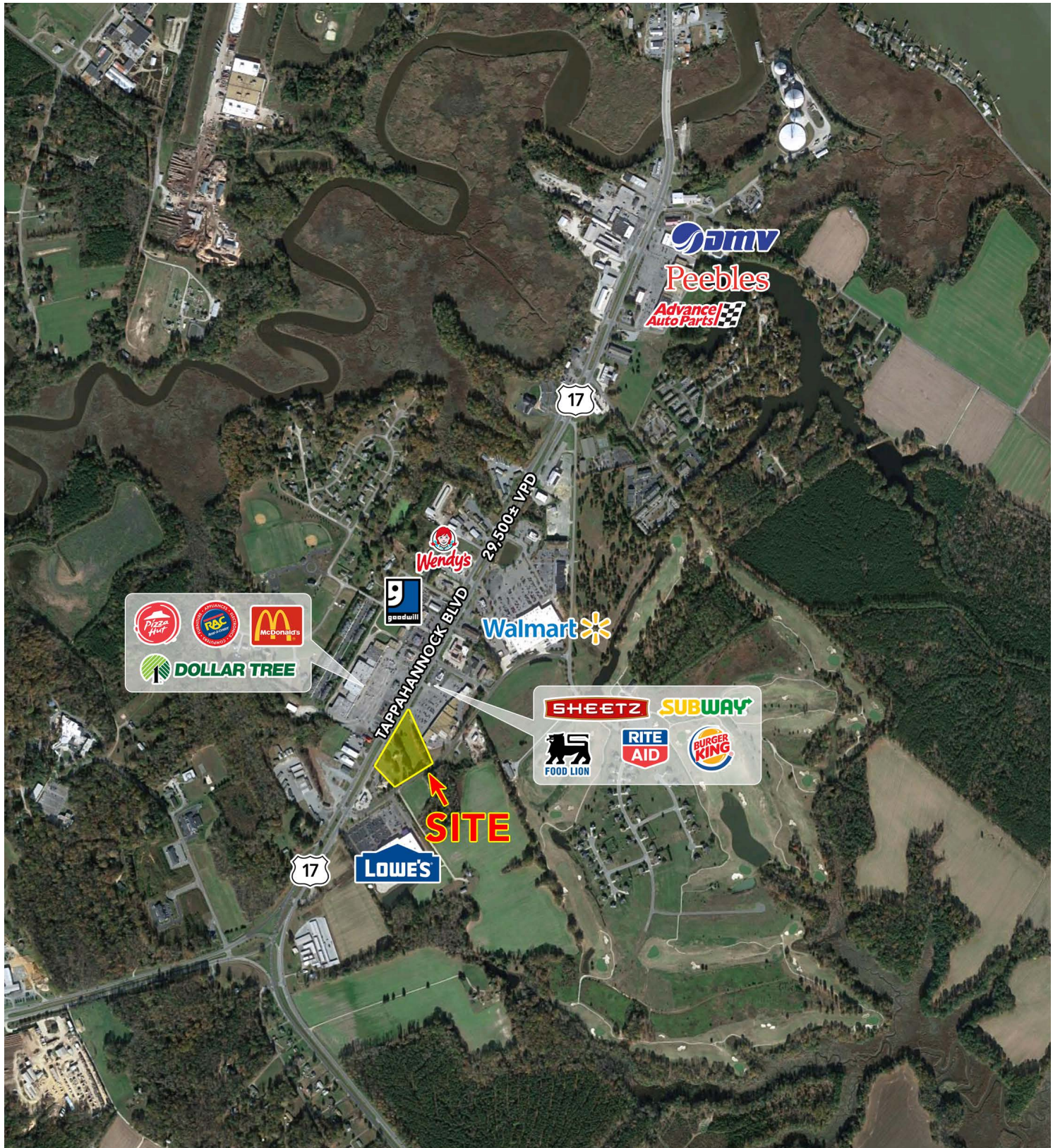
Sigma National, Inc
1213 Mall Drive
Richmond, VA 23235
(804) 423-5335
www.sigmanational.com

FOR MORE INFORMATION

Wilson Davis
wilsondavis@sigmanational.com
(804) 423-5335, x301

±3.6 acres Available for Development

1904 Tappahannock Boulevard | Tappahannock, VA 22560



Information contained within is deemed reliable, but is not guaranteed. Subject to prior leasing.