

FOR SALE / FOR LEASE

Heaven & Earth - 11004 Midlothian Turnpike Midlothian, VA



- \$849,000 or For Lease
- Parcel Size: 1.342 acres
- 6,400 sq ft expandable
- Zoned: C-2
- 1/4 east of the Chesterfield Towne Center Mall

2003 Traffic Counts

- East of Midlothian Turnpike at Huguenot Road56,000 VPD
- West of Midlothian Turnpike at Huguenot Road36,000 VPD
- North on Huguenot Road at Midlothian Turnpike39,000 VPD

2002 Demographics

	1 Mile	3 Miles	5 Miles
Population	3,011	50,872	100,877
Average HH Income	\$77,884	\$97,483	\$97,343

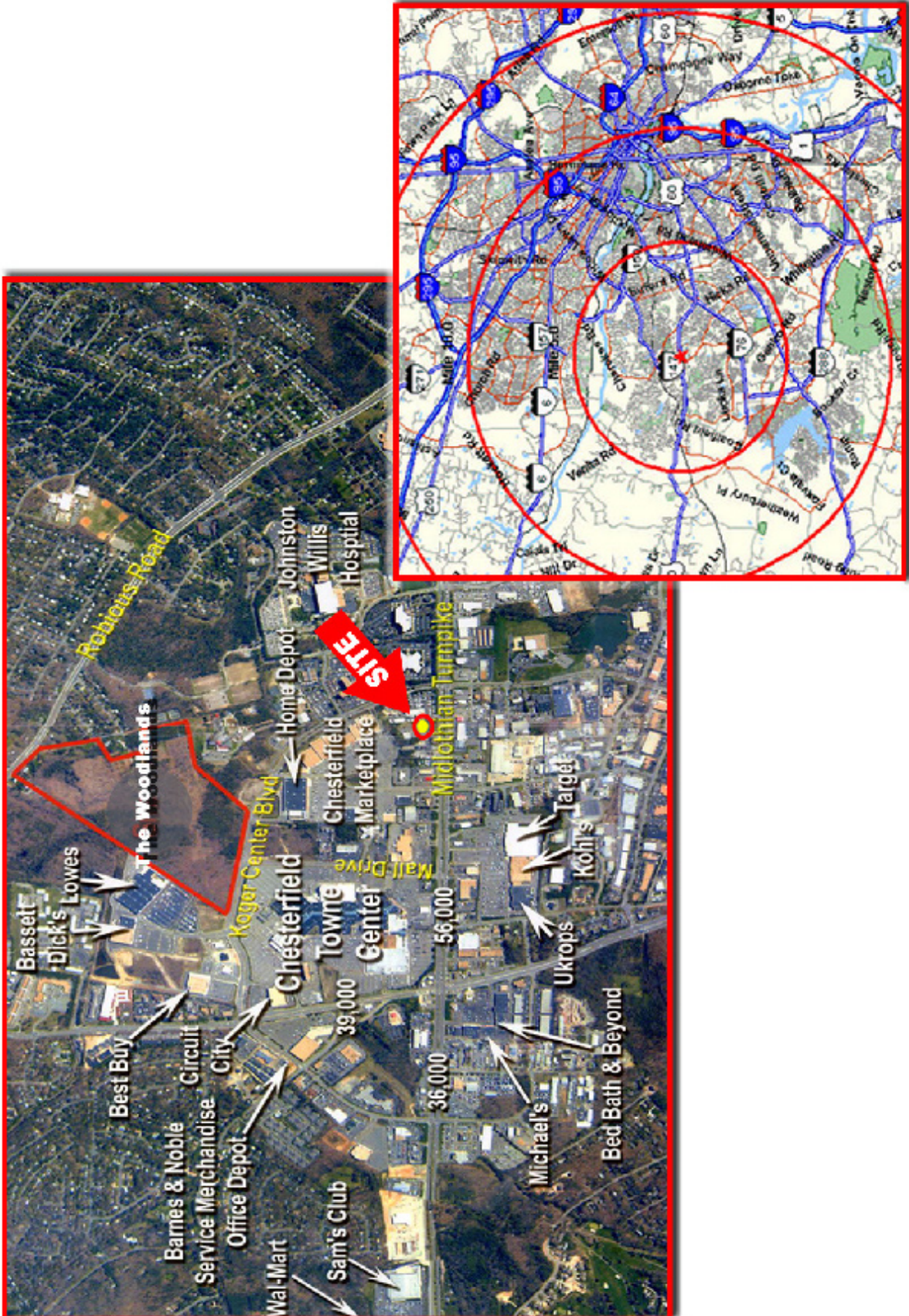


Sigma National, Inc
 1213 Mall Drive
 Richmond, VA 23235
 (804) 423-5335 :: Fax: (804) 423-5339
 www.sigmanational.com

CONTACT
 Wilson Davis
 (804) 423-5335 x301
 wilsondavis@sigmanational

FOR SALE / FOR LEASE

Heaven & Earth - 11004 Midlothian Turnpike
Midlothian, VA



Information contained within is deemed reliable, but is not guaranteed. Subject to prior leasing.